

PENNSYLVANIA STATE POLICE Collision Analysis and Reconstruction Unit	
Incident number 2008 PSP Recon Seminar	
Date 09/30/2008	Time 1115 hours
Location Pennsylvania Transportation Institute (PTI) Test Track	
Investigator	
Agency Pennsylvania State Police	



A 2003 Chevrolet S10 truck was crashed head-on with a 2005 Ford 500 at the Pennsylvania State Police Conference (PSP), State College, PA on Sept 30th, 2008.



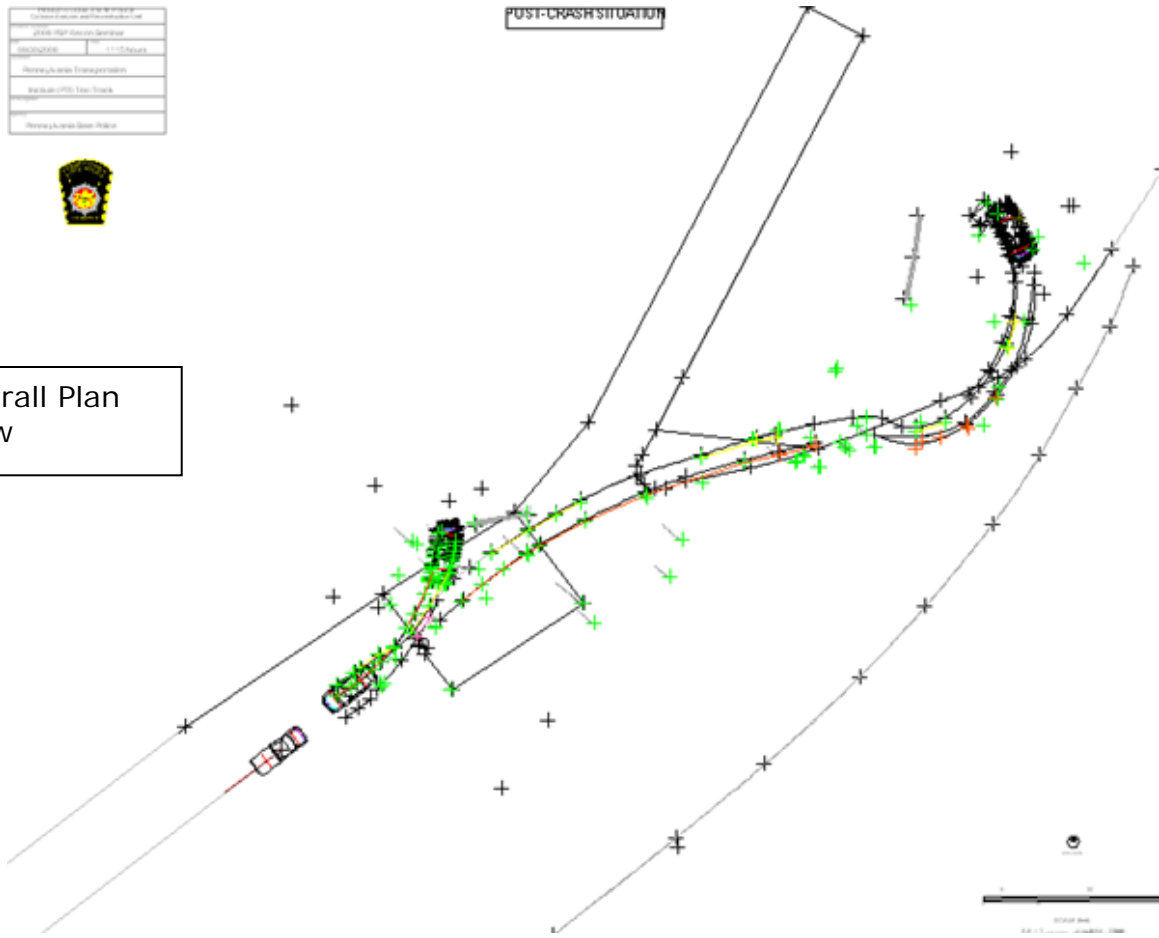
The mapping technologies used for the crash evidence collection were lasers scanners, a total station and close-range photogrammetry (digital camera and software.) The photogrammetry system used was **iWitness™**, www.iwitnessphoto.com.

Massachusetts State Police Communications and Records Unit	
2016 Ford Focus Sedan	11-17-2016
11-17-2016	11-17-2016
Massachusetts Transportation	Massachusetts Transportation
Massachusetts State Police	Massachusetts State Police

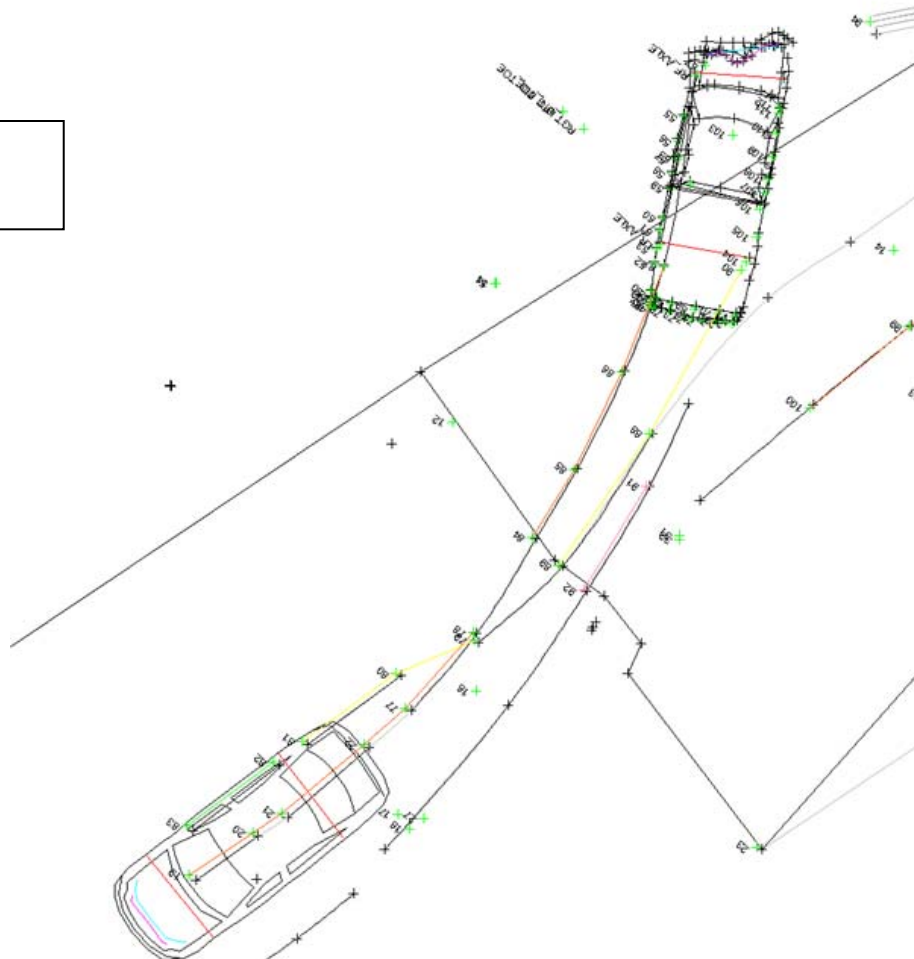


POST-CRASH SITUATION

Overall Plan View



Expanded View



Summary

iWitness proved in this crash scene reconstruction test that it is inexpensive, fast, accurate and relatively simple to use. Also noteworthy is how readily the iWitness software functionality can be combined, where required, with other 3D measuring technologies to provide more complete and comprehensive forensic mapping.