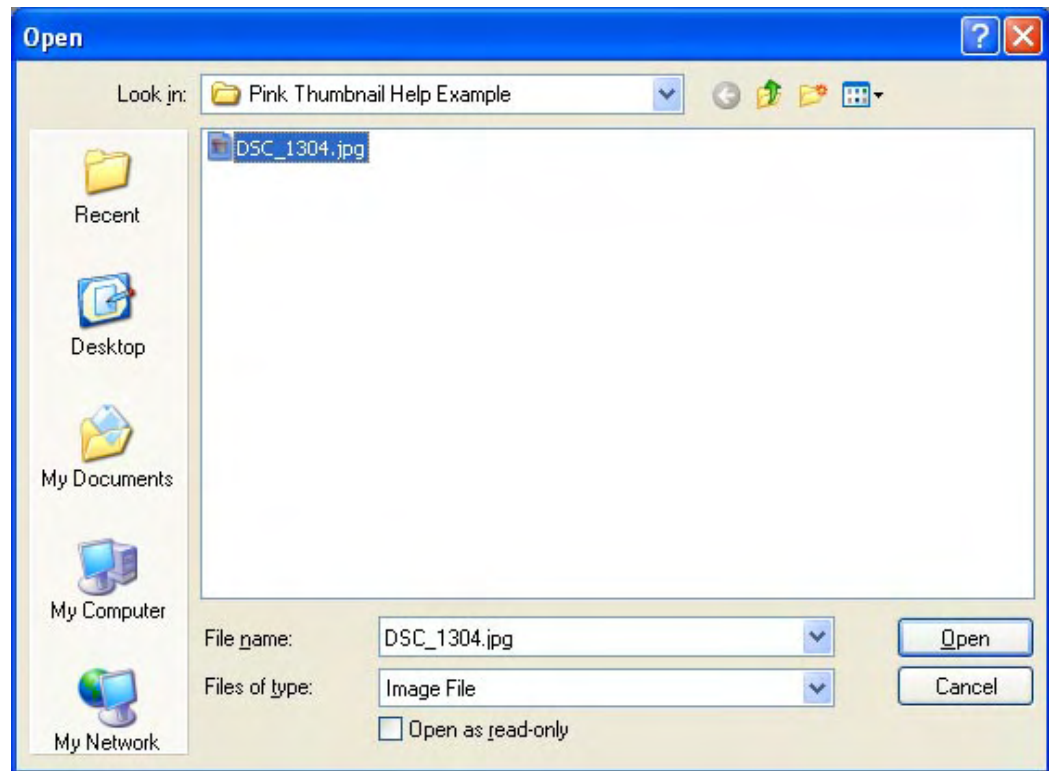




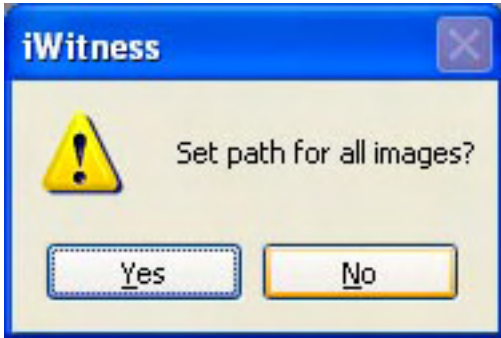
**STEP 1.**  
Right Mouse Click on  
any of the pink thumbnails  
and select **"Set Image Path..."**



**STEP 2.**  
Path to the working folder where you've placed your  
images. In this example, we made a folder named  
*Look in:* **"Pink Thumbnail Help Example"**.

**Highlight the image** (in this example it is DSC\_1304.jpg)

Click the **Open** button



**STEP 3.**  
Click the Yes

**STEP 4.**  
The thumbnails will now display the images.

Click the Save icon

