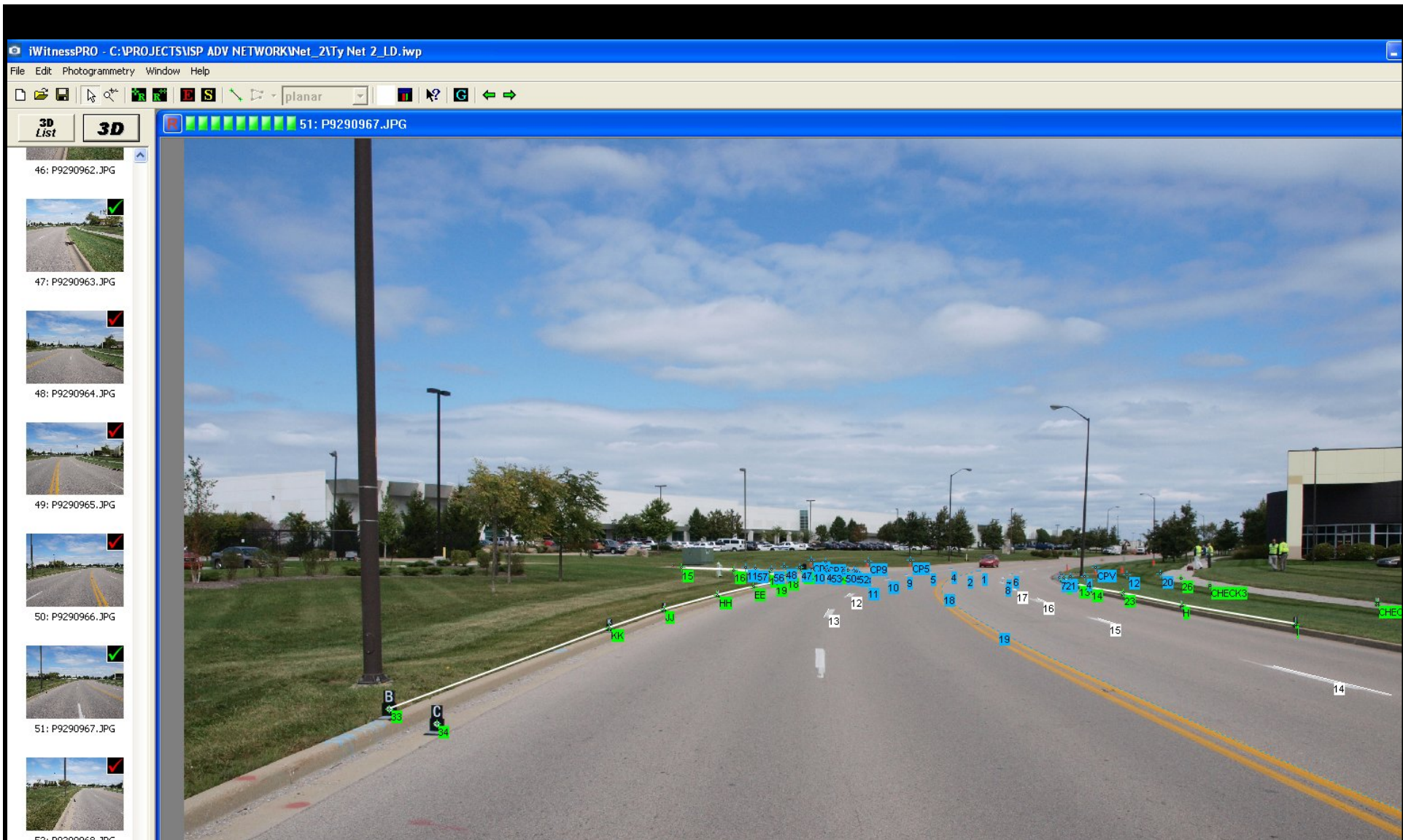


Indiana State Police – iWitness Advanced Workshop Project conducted with DeChant Consulting Services – DCS Inc.

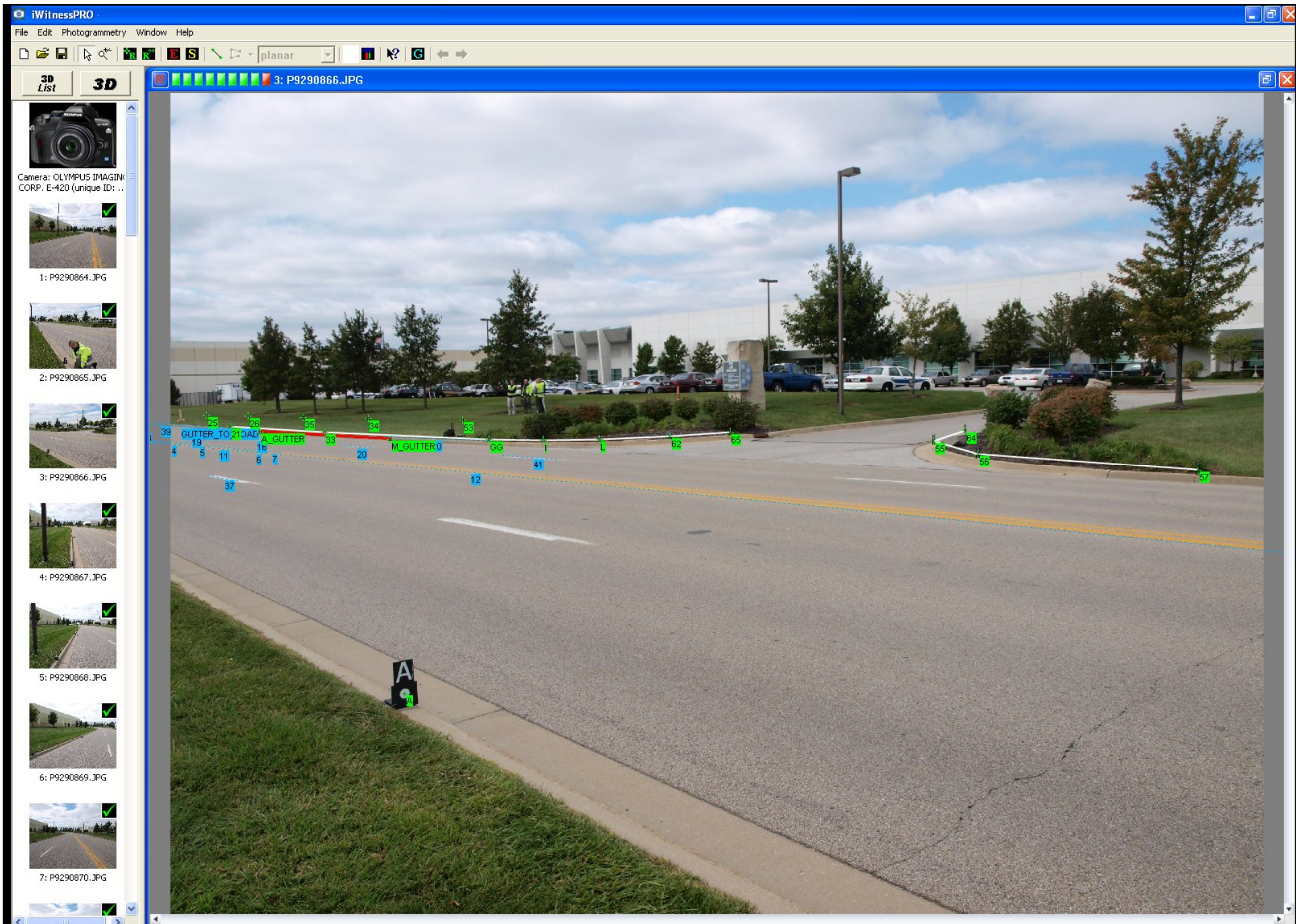
October 1st, 2009

Highlights:

- One Trooper imaged over 740 feet of mapped roadway using a 10MP Digital Camera and Photogrammetric Markers.
- The training project imaging and “clean up” total time was 1 hour.
- All road features (skip lines, double yellow lines, storm drains, curbing and street lights were POLYLINE traced using *iWitness*.
- The two photogrammetric networks were automatically “linked” in *iWitness* and the single DXF was imported into the Crash Zone diagramming program.
- The camera was calibrated via *iWitness*’ self-calibration.



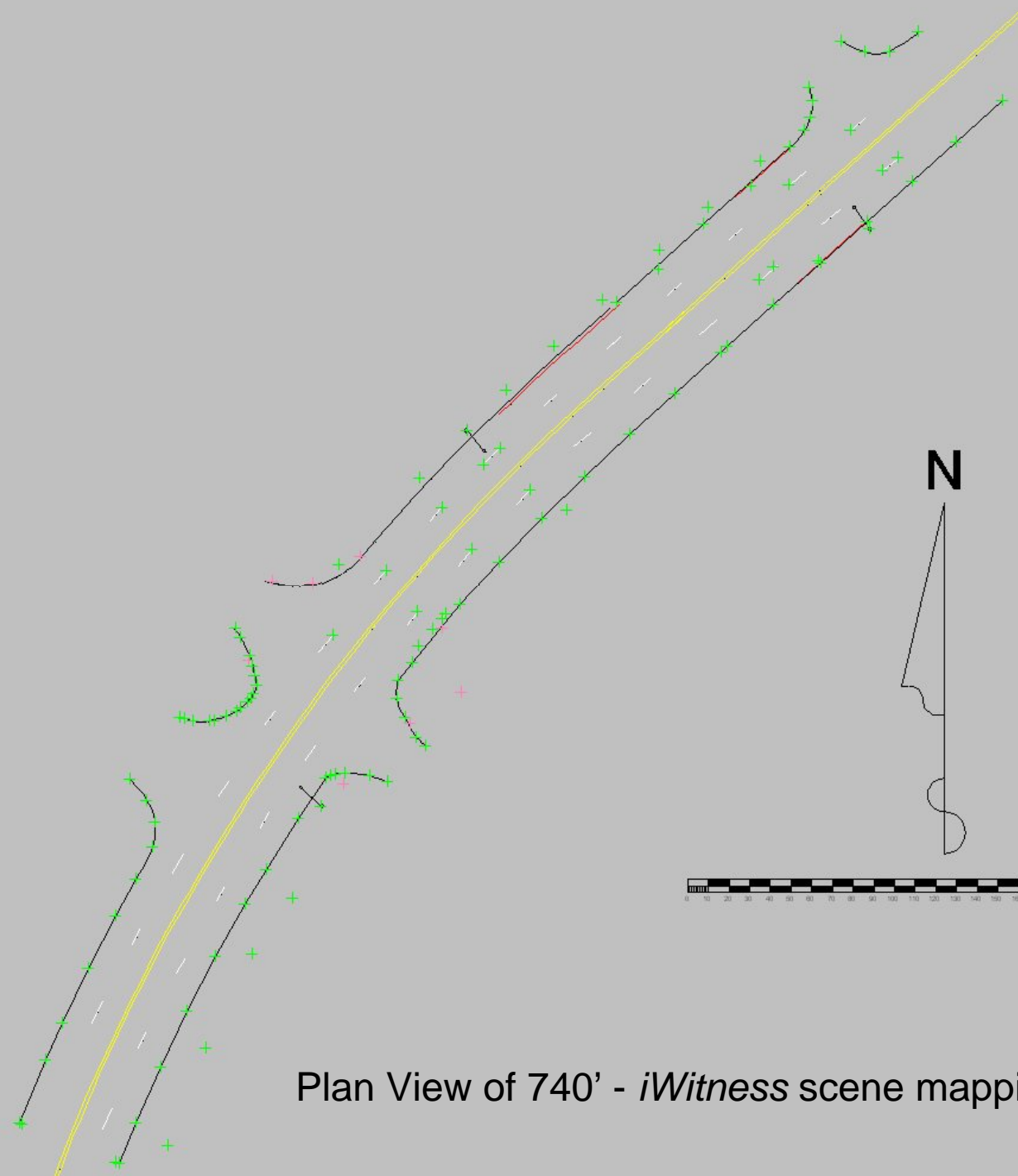
Looking in East Direction



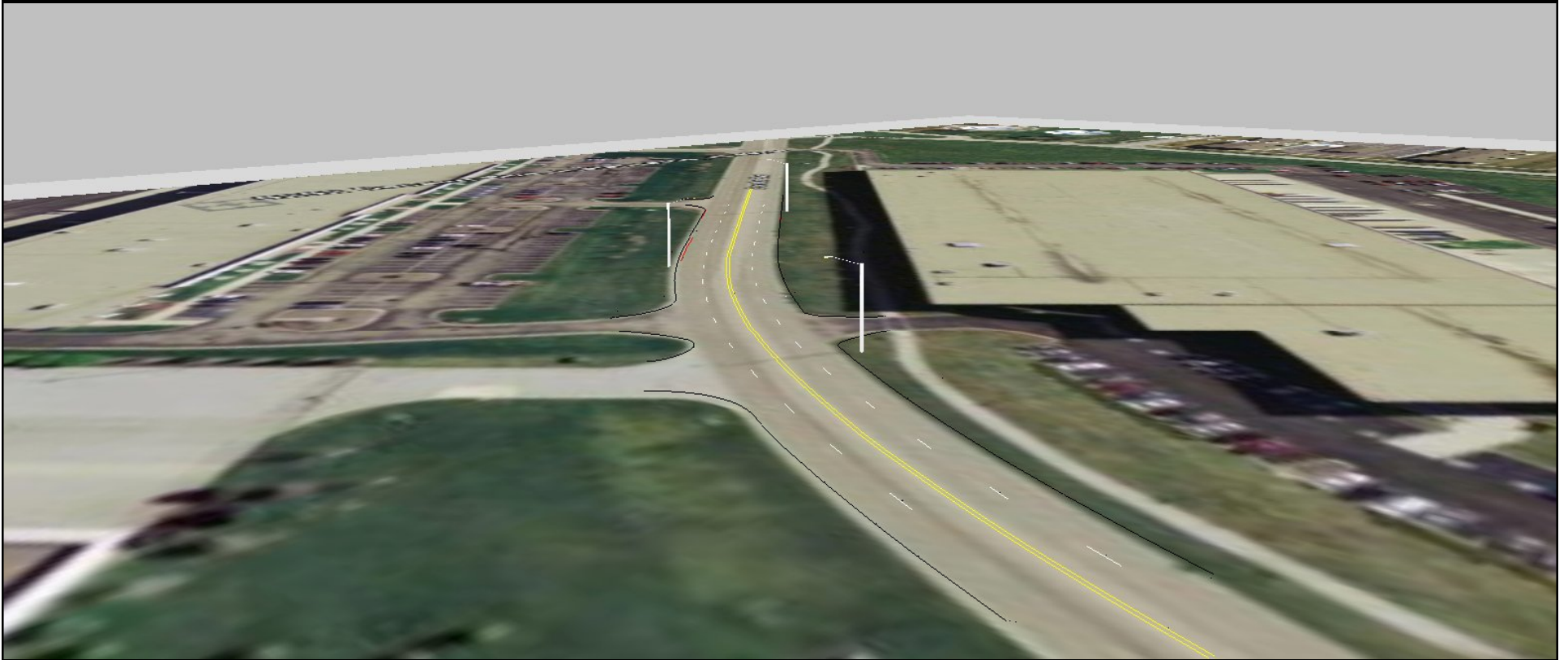
Looking in NW direction



iWitness 3D view of both networks before Project Linking



Plan View of 740' - *iWitness* scene mapping



3D view of iWitness scene mapping with Google overlay (for illustrative purposes)